

GENERAL NOTES
 This drawing is the property of zebra Projects Ltd and is not to be copied, reproduced, retained or disclosed to any unauthorized person, either wholly, electronically or in part without the written consent of zebra Projects Ltd.

ILLUSTRATED BRIEF
 Any drawing prefixed with "Illustrated brief" in the drawing title block must not in any way be used on site as a construction drawing or used for final detailed coding.

MAINTENANCE NOTES

Le Pain Quotidien
 INTERNAL AREA
 135.00 sq m / 1453.14 sq ft

BRASSERIE
 EXTERNAL AREA
 109.00 sq m / 1173.28 sq ft

REVISION	INIT	DATE
A	FIRST ISSUE	AQ 2012-06-26

CLIENT
 MH ALSHAYA

PROJECT TITLE
 BRASSERIE THE AVENUES MALL KUWAIT

DRAWING TITLE
 GENERAL ARRANGMENT

1:50 @ A1	2012-06-07
SCALE	DATE
23242	AQ
PROJECT NO.	DRAWN BY
23242/010	A
DRAWING NO.	REVISION

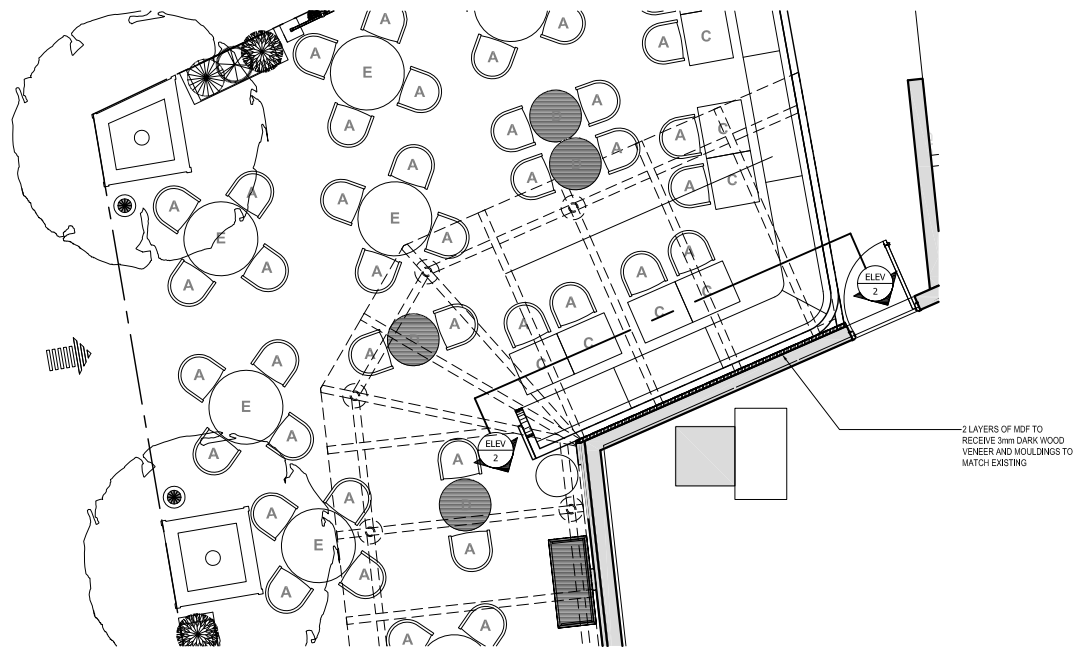
zebra
 PROJECTS FZE

PO BOX 120789
 SAIF
 SHARJAH
 UAE

Tel: +971 6 557 5229
 Fax: +971 6 575 889

Zebra Projects FZE, licence No. 05/01-04425

1 GENERAL ARRANGMENT
 scale 1:50

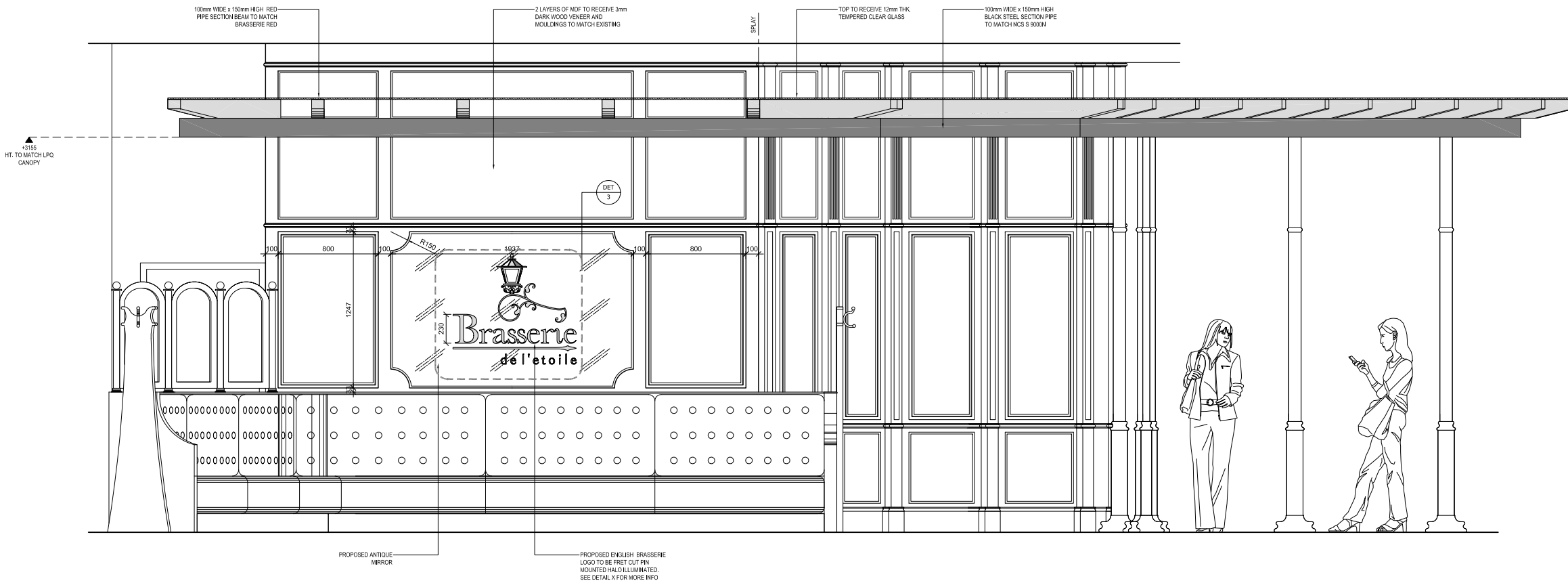


1 GENERAL ARRANGEMENT
scale 1:50



3 LOGO DETAIL
scale 1:5

4 SECTION THRU
scale 1:5



2 ELEVATION
scale 1:20

GENERAL NOTES
This drawing is the property of zebra Projects Ltd and is not to be copied, reproduced, retained or disclosed to any unauthorized person, either wholly, electronically or in part without the written consent of zebra Projects Ltd.

ILLUSTRATED BRIEF
Any drawing prefixed with 'Illustrated brief' in the drawing title block must not, in any way be used on site as a construction drawing or used for final detailed coding.

MAINTENANCE NOTES

NOTE:

A) MATERIAL/ FINISH AS REQUIRED BY DETAIL OR ASSEMBLY. MATERIAL/ FINISH TO BE AS DURABLE AS POSSIBLE.

B) THE STRUCTURE OF THE LOGO & WALL NEEDS TO BE REVIEWED AND APPROVED BY THE OWNER'S ARCHITECT AND STRUCTURAL ENGINEER.

C) FABRICATOR IS RESPONSIBLE FOR COORDINATING WITH THE ENGINEER TO ENSURE STEADINESS OF THE LOGO & WALL.

A	FIRST ISSUE	AQ	2012-06-26
REVISION		INT	DATE
W:\DESIGN\BRANDSIAL SHAYA\23242 - BRASSERIE THE AVENUES MALL KUWAIT\Cad drawings\Current			
CAD REFERENCE			

CLIENT

MH ALSHAYA

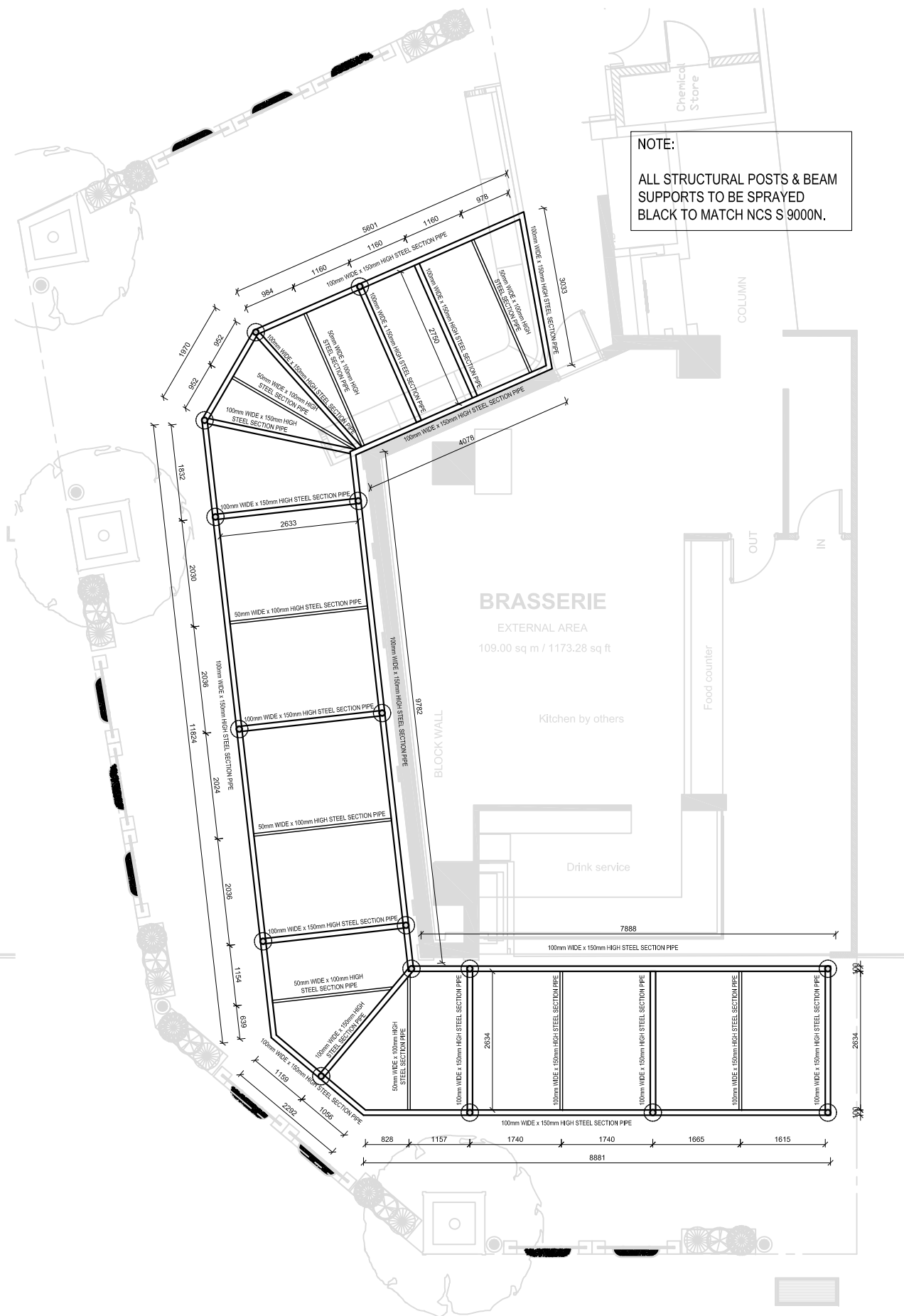
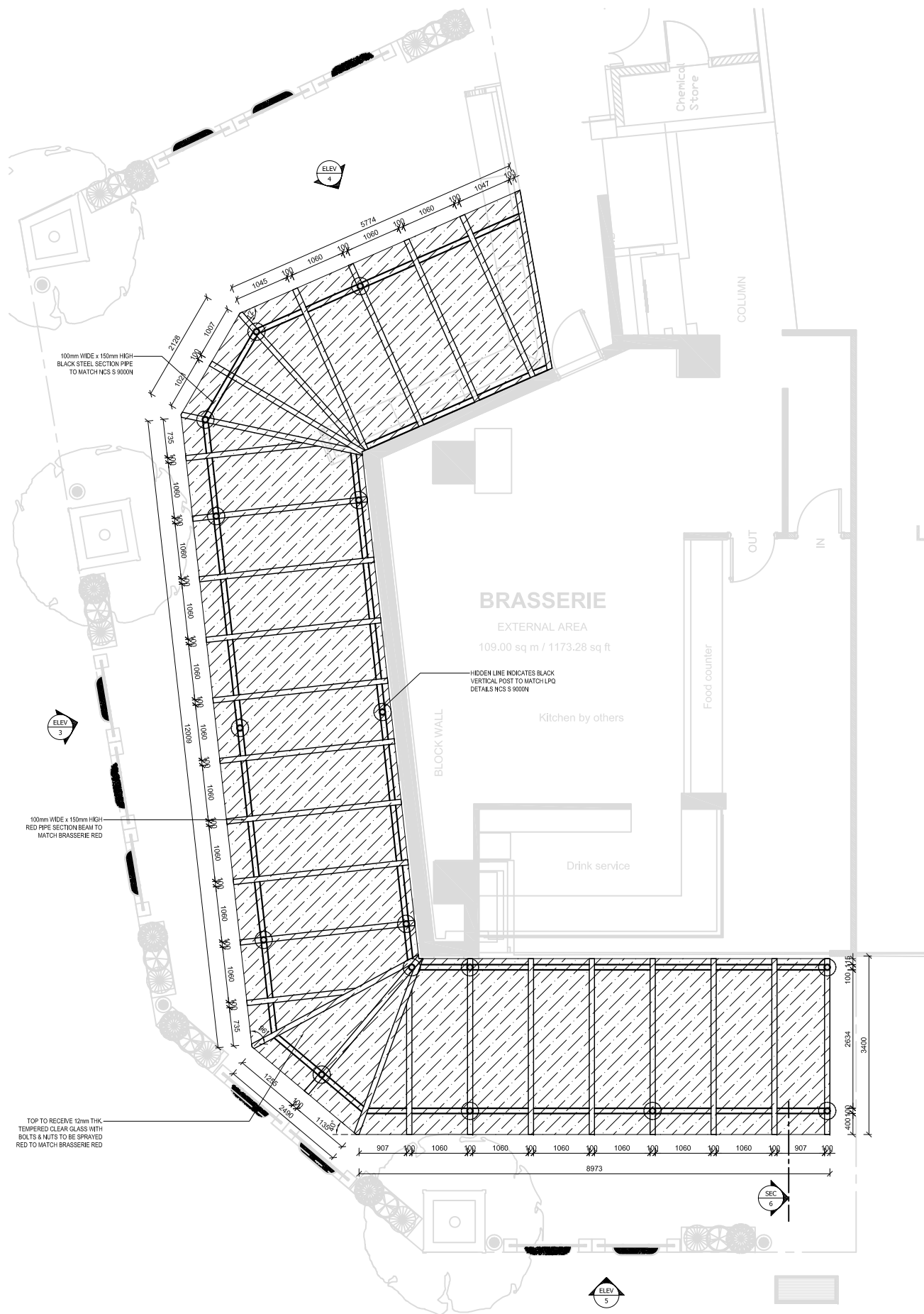
PROJECT TITLE

BRASSERIE THE AVENUES MALL KUWAIT

DRAWING TITLE

ELEVATION & SIGNAGE LOGO DETAILS

1:50, 1:20, 1:5, 1:1 @ A1	2012-06-07
SCALE	DATE
23242	AQ
PROJECT NO.	DRAWN BY
23242/070	A
DRAWING NO.	REVISION



1 CANOPY LAYOUT
scale 1:50

2 CANOPY STRUCTURAL LAYOUT
scale 1:50

GENERAL NOTES
This drawing is the property of zebra Projects Ltd and is not to be copied, reproduced, retained or disclosed to any unauthorized person, either wholly, electronically or in part without the written consent of zebra Projects Ltd.

ILLUSTRATED BRIEF
Any drawing prefixed with 'Illustrated brief' in the drawing title block must not, in any way be used on site as a construction drawing or used for final detailed coding.

MAINTENANCE NOTES

NOTE:

- A) MATERIAL FINISH AS REQUIRED BY DETAIL OR ASSEMBLY. MATERIAL FINISH TO BE AS DURABLE AS POSSIBLE.
- B) THE STRUCTURE OF THE CANOPY NEEDS TO BE REVIEWED AND APPROVED BY THE OWNER'S ARCHITECT AND STRUCTURAL ENGINEER.
- C) FABRICATOR IS RESPONSIBLE FOR COORDINATING WITH THE ENGINEER TO ENSURE STEADINESS OF THE CANOPY.

A	FIRST ISSUE	AQ	2012-06-26
REVISION		INT	DATE
W:\DESIGN\BRANDSIAL SHAYA\23242 - BRASSERIE THE AVENUES MALL KUWAIT\Cad drawings\Current			
CAD REFERENCE			

MH ALSHAYA

CLIENT

BRASSERIE THE AVENUES MALL KUWAIT

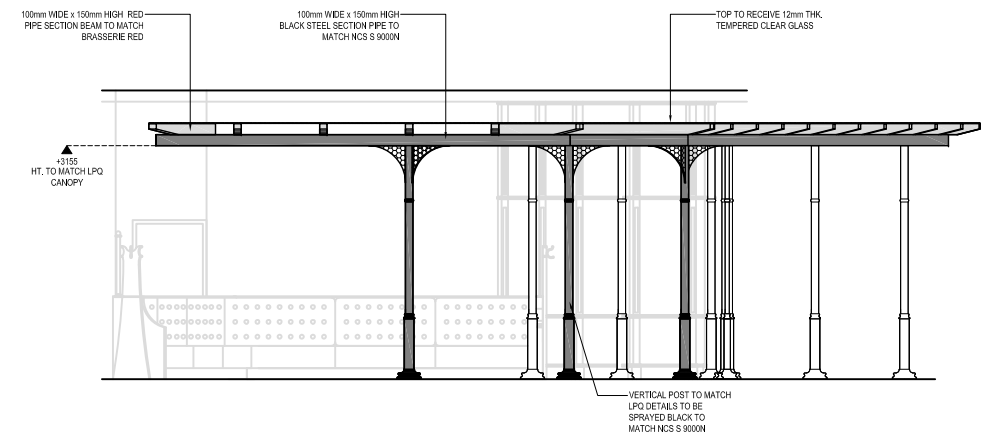
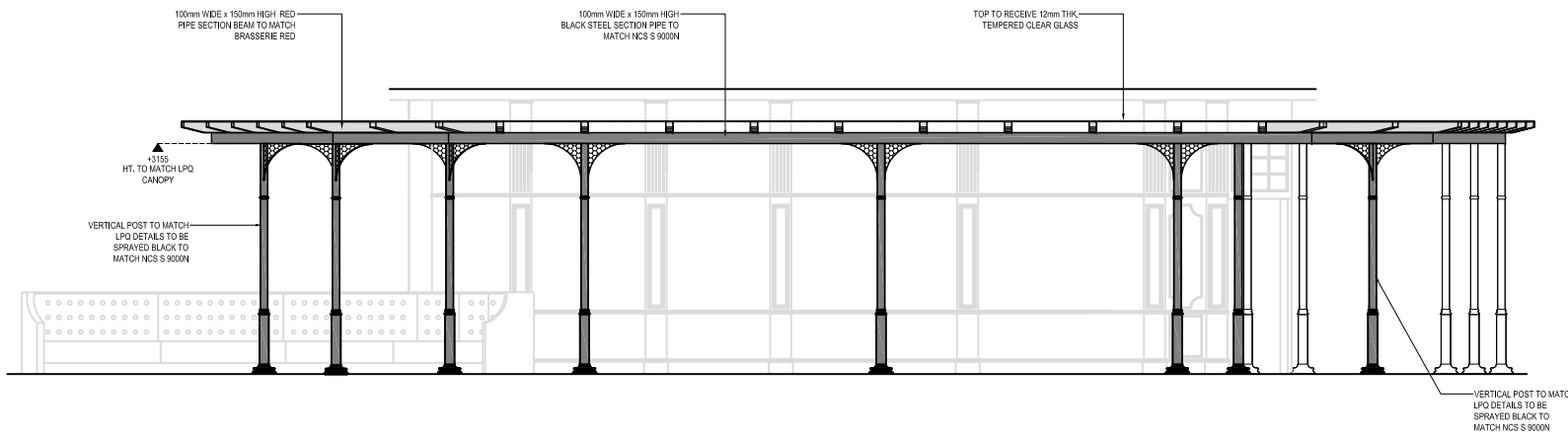
PROJECT TITLE

CANOPY DETAILS

DRAWING TITLE	
1:50 @ A1	2012-06-07
SCALE	DATE
23242	AQ
PROJECT NO.	DRAWN BY
23242/100	A
DRAWING NO.	REVISION

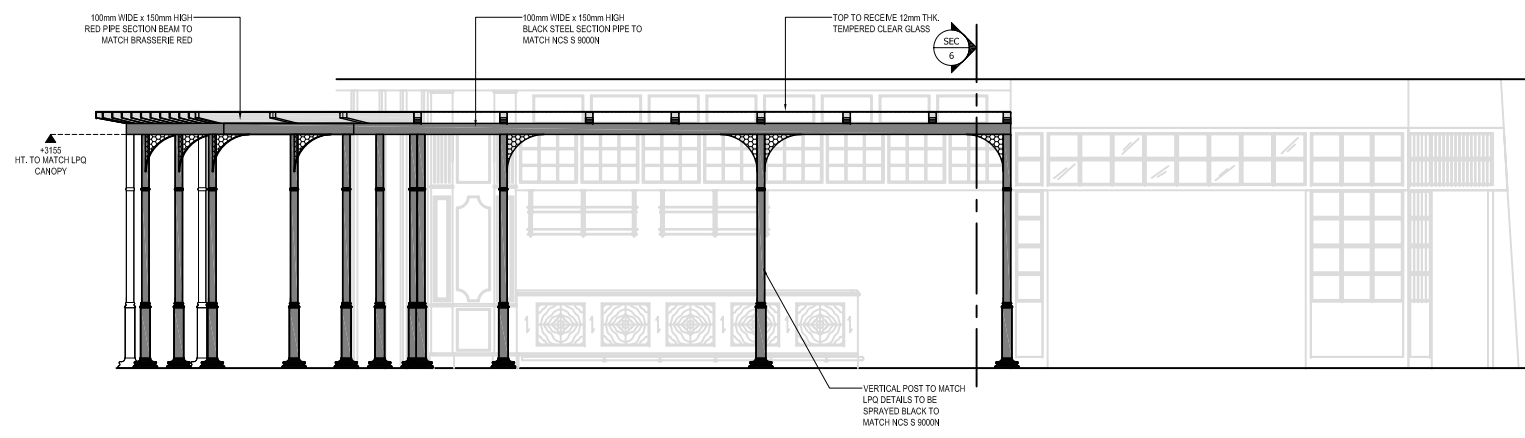
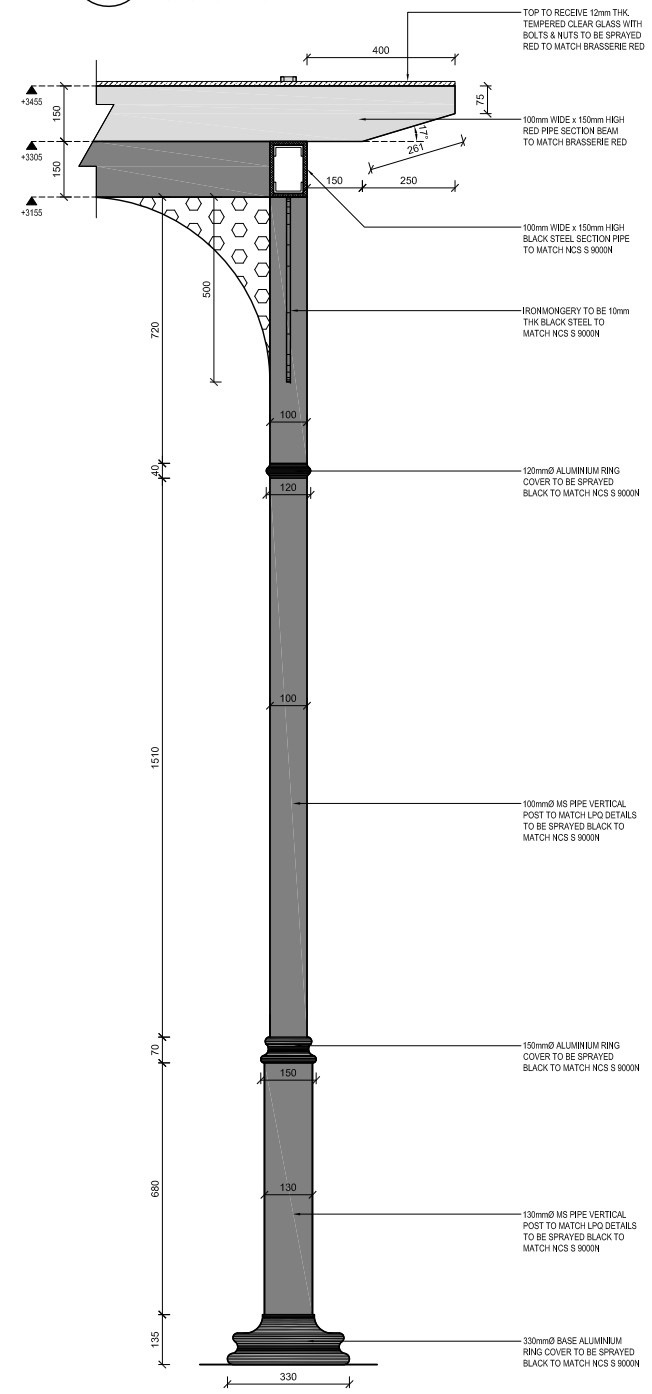
zebra
PROJECTS FZE

PO BOX 120789
SAIF
SHARJAH
UAE
Tel: +971 6 557 5229
Fax: +971 6 575 889
Zebra Projects FZE, Licence No. 05-01-64425

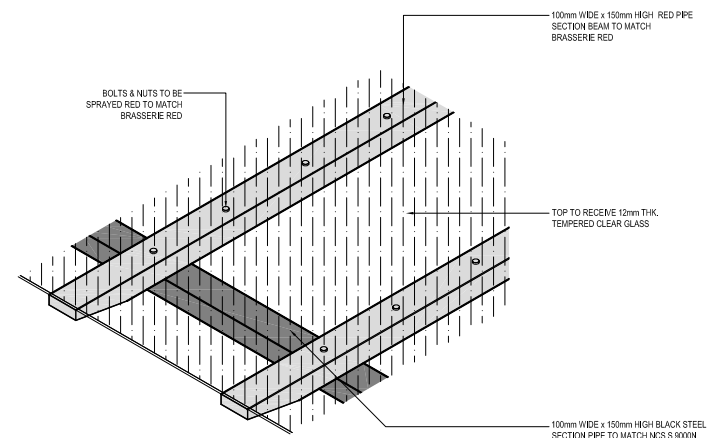


3 ELEVATION
scale 1:50

4 ELEVATION
scale 1:50



5 ELEVATION
scale 1:50



7 ISOMETRIC
nts



8 VISUAL REFERENCE
nts

6 SECTION THRU
scale 1:10

GENERAL NOTES
This drawing is the property of zebra Projects Ltd and is not to be copied, reproduced, retained or disclosed to any unauthorised person, either wholly, electronically or in part without the written consent of zebra Projects Ltd.

ILLUSTRATED BRIEF
Any drawing prefilled with 'illustrated brief' in the drawing title block must not in any way be used on site as a construction drawing or used for final detailed coding.

MAINTENANCE NOTES

- NOTE:**
- A) MATERIAL/ FINISH AS REQUIRED BY DETAIL OR ASSEMBLY. MATERIAL/ FINISH TO BE AS DURABLE AS POSSIBLE.
 - B) THE STRUCTURE OF THE CANOPY NEEDS TO BE REVIEWED AND APPROVED BY THE OWNER'S ARCHITECT AND STRUCTURAL ENGINEER.
 - C) FABRICATOR IS RESPONSIBLE FOR COORDINATING WITH THE ENGINEER TO ENSURE STEADINESS OF THE CANOPY.

A	FIRST ISSUE	AQ	2012-06-26
REVISION		INT	DATE
W:\DESIGN\BRANDSIAL SHAYA\23242 - BRASSERIE THE AVENUES MALL KUWAIT\Cad drawings\Current			
CAD REFERENCE			

MH ALSHAYA

CLIENT

BRASSERIE THE AVENUES MALL KUWAIT

PROJECT TITLE

CANOPY DETAILS

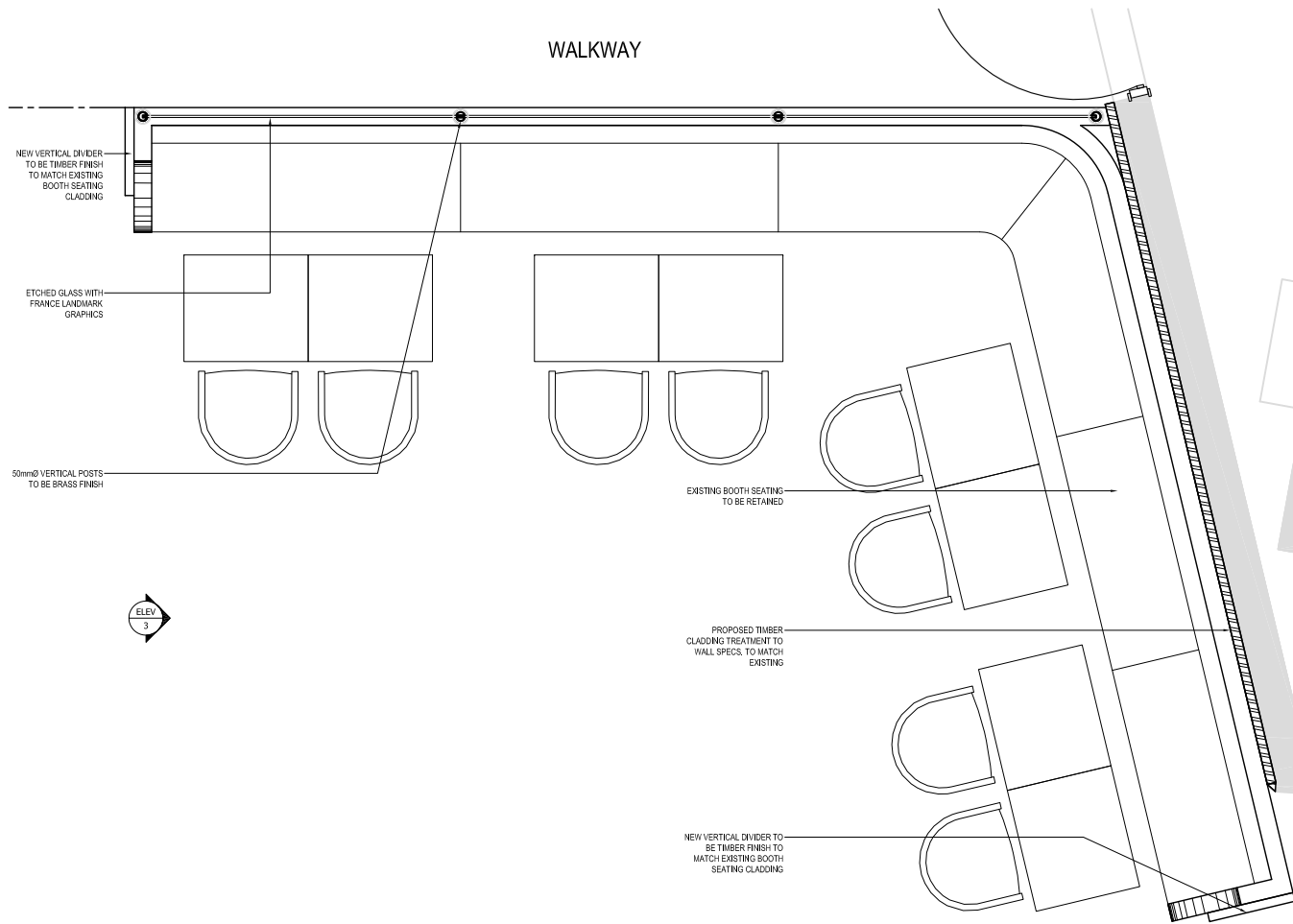
DRAWING TITLE	
1:50, 1:10 @ A1	2012-06-07
SCALE	DATE
23242	AQ
PROJECT NO.	DRAWN BY
23242/101	A
DRAWING NO.	REVISION

zebra
PROJECTS FZE

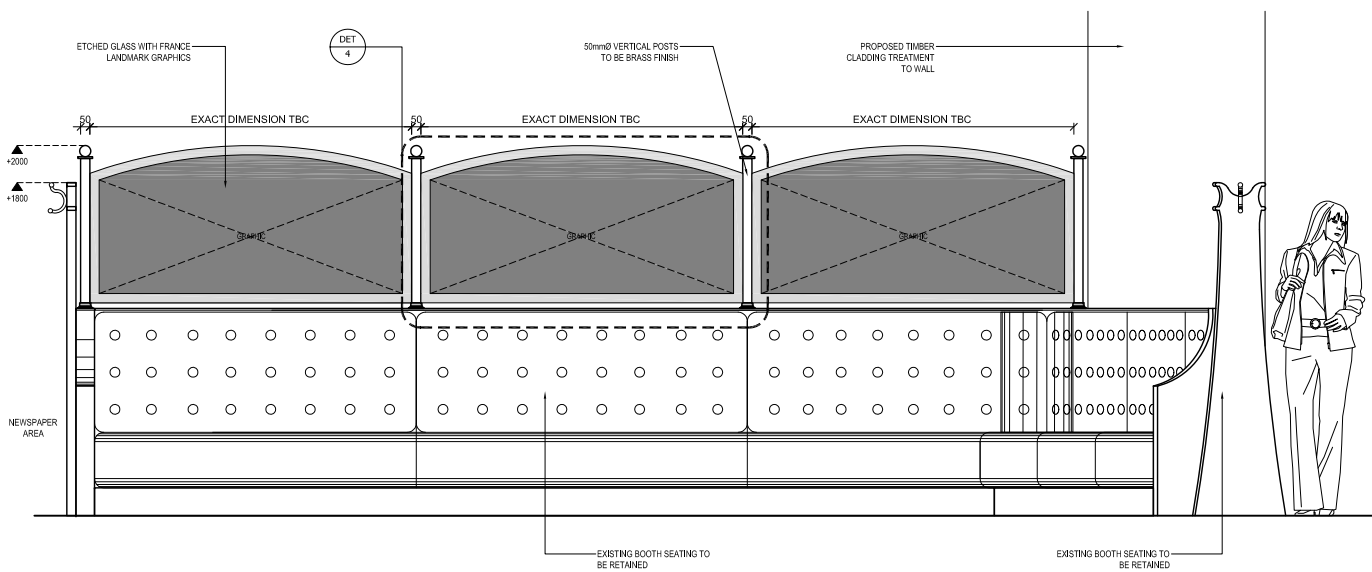
PO BOX 120789
SAIF
SHARJAH
UAE

Tel: +971 6 557 5229
Fax: +971 6 575 889

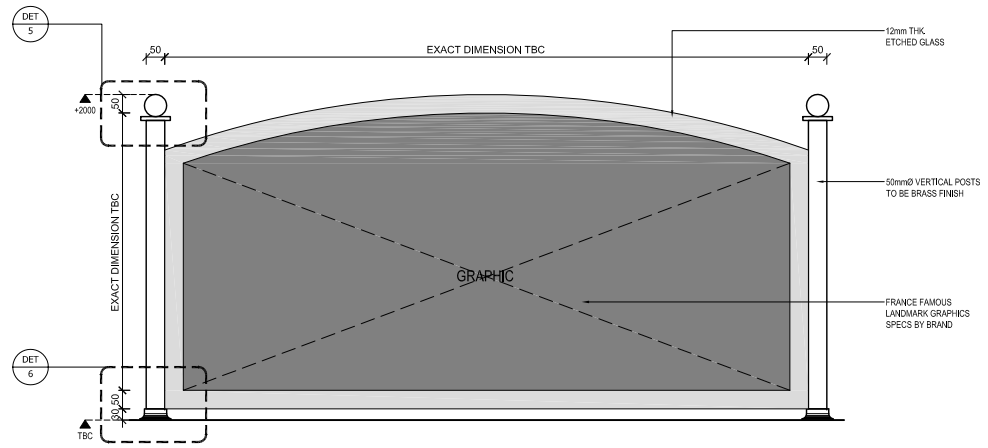
Zebra Projects FZE, Source No: 05-01-04425



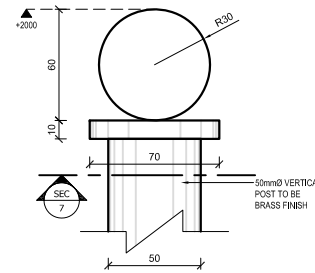
1 BANQUET SEATING PLAN
scale 1:20



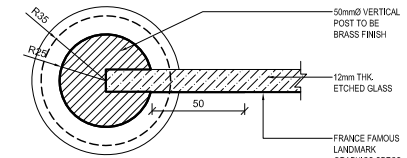
2 ELEVATION
scale 1:20



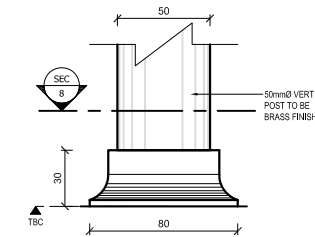
4 DETAIL
scale 1:10



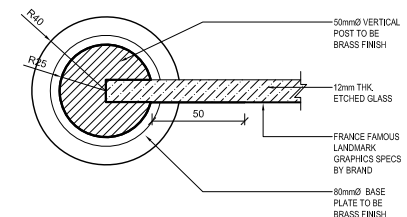
5 DETAIL
scale 1:2



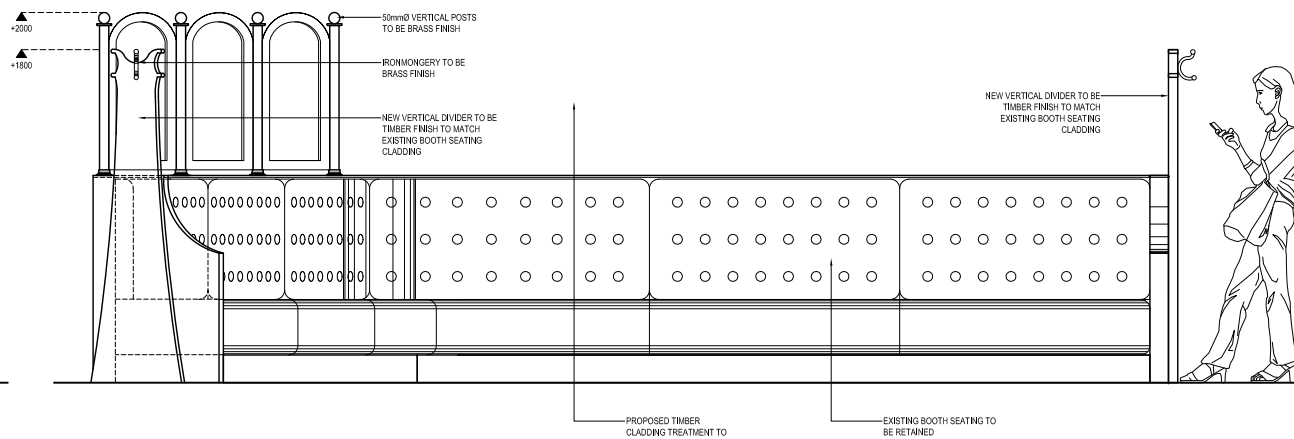
7 SECTION THRU
scale 1:2



6 DETAIL
scale 1:2



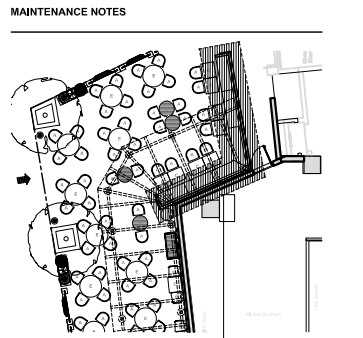
8 SECTION THRU
scale 1:2



3 ELEVATION
scale 1:20

GENERAL NOTES
This drawing is the property of zebra Projects Ltd and is not to be copied, reproduced, retained or disclosed to any unauthorized person, either wholly, electronically or in part without the written consent of zebra Projects Ltd.

ILLUSTRATED BRIEF
Any drawing prefixed with 'Illustrated brief' in the drawing title block must not in any way be used on site as a construction drawing or used for final detailed coating.



LOCATION PLAN

NOTE:
A) MATERIAL / FINISH AS REQUIRED BY DETAIL OR ASSEMBLY. MATERIAL / FINISH TO BE AS DURABLE AS POSSIBLE.
B) THE STRUCTURE OF THE FIXTURE NEEDS TO BE REVIEWED AND APPROVED BY THE OWNER'S ARCHITECT AND STRUCTURAL ENGINEER.
C) FABRICATOR IS RESPONSIBLE FOR COORDINATING WITH THE ENGINEER TO ENSURE STEADINESS OF THE FIXTURE.

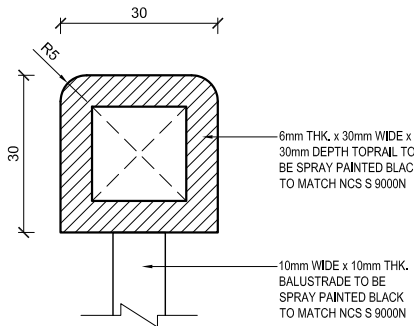
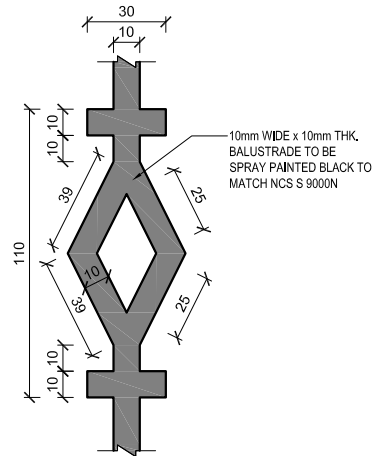
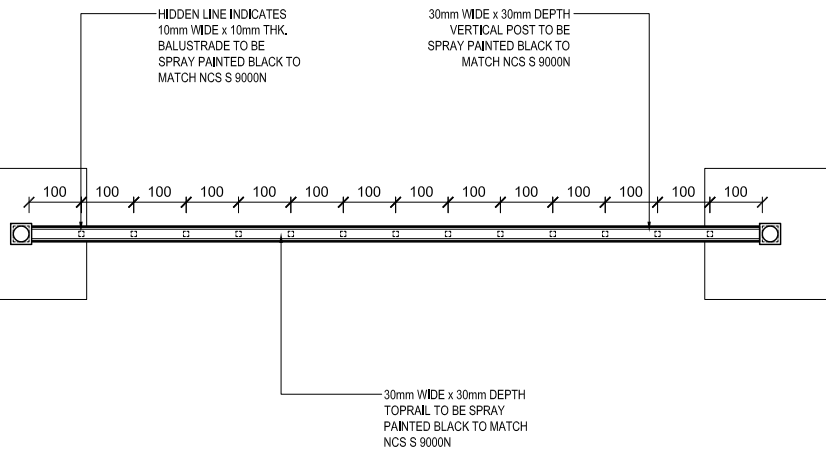
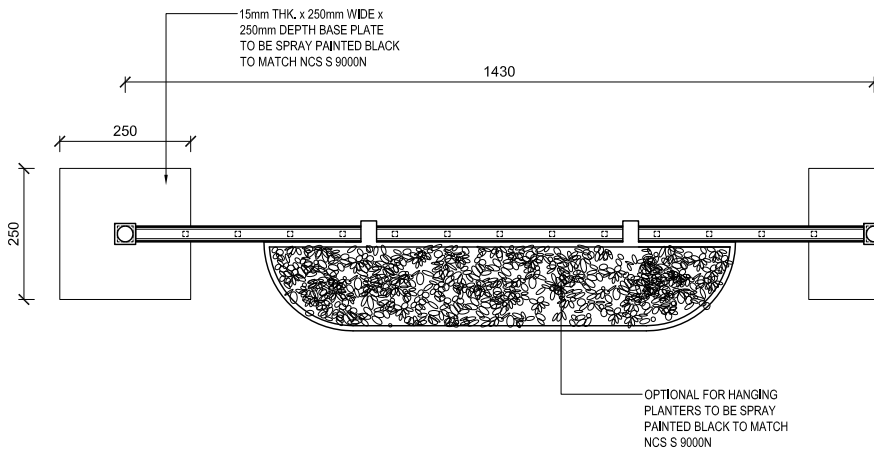
REVISION	INIT	DATE
A	FIRST ISSUE	AQ 2012-06-26

W:\DESIGN\BRANDSIAL SHAYA\23242 - BRASSERIE THE AVENUES MALL KUWAIT\Cad drawings\Current
CAD REFERENCE

CLIENT	MH ALSHAYA
PROJECT TITLE	BRASSERIE THE AVENUES MALL KUWAIT
DRAWING TITLE	BANQUET SEATING PARTITION DETAILS
SCALE	1:20, 1:10, 1:2 @ A1
DATE	2012-06-07
PROJECT NO.	23242
DRAWN BY	AQ
DRAWING NO.	23242/200
REVISION	A

zebra
PROJECTS FZE

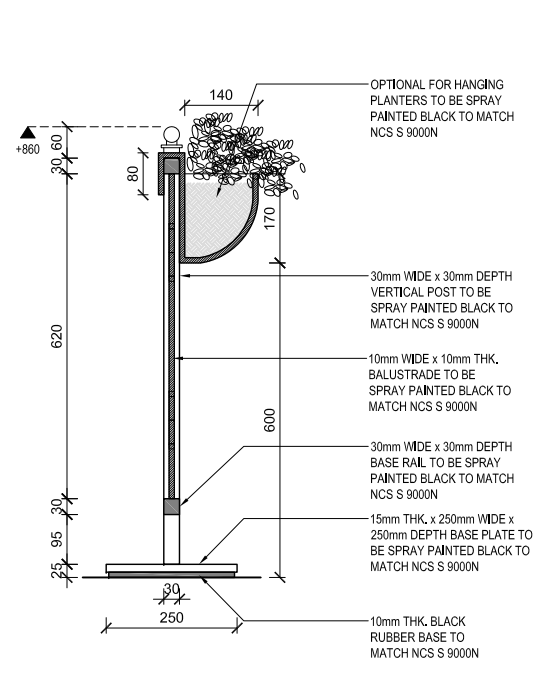
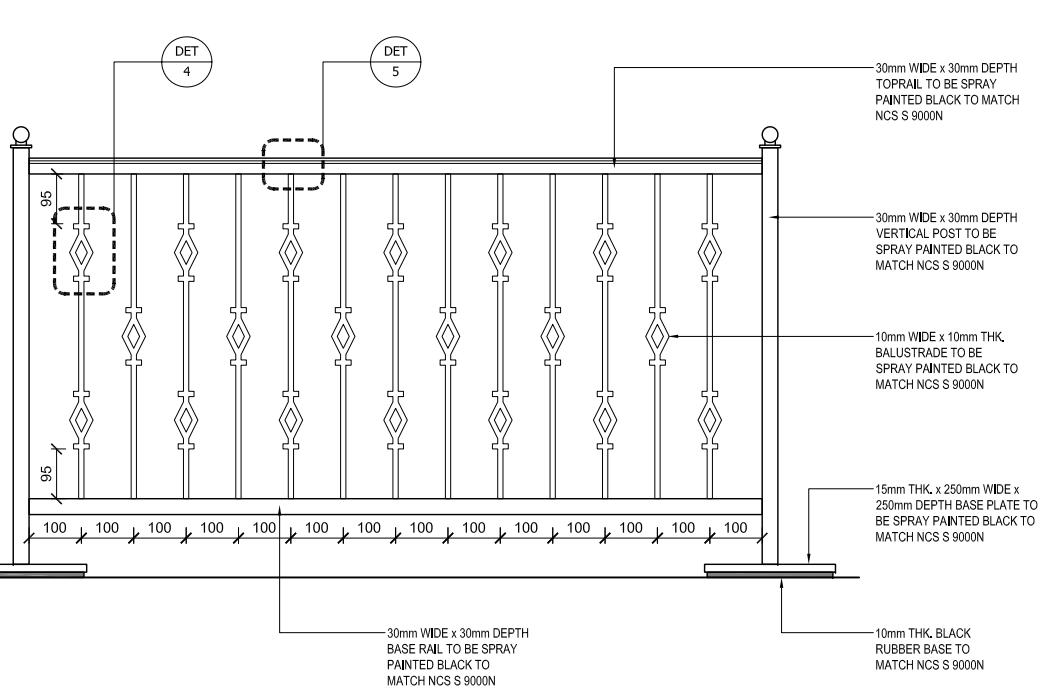
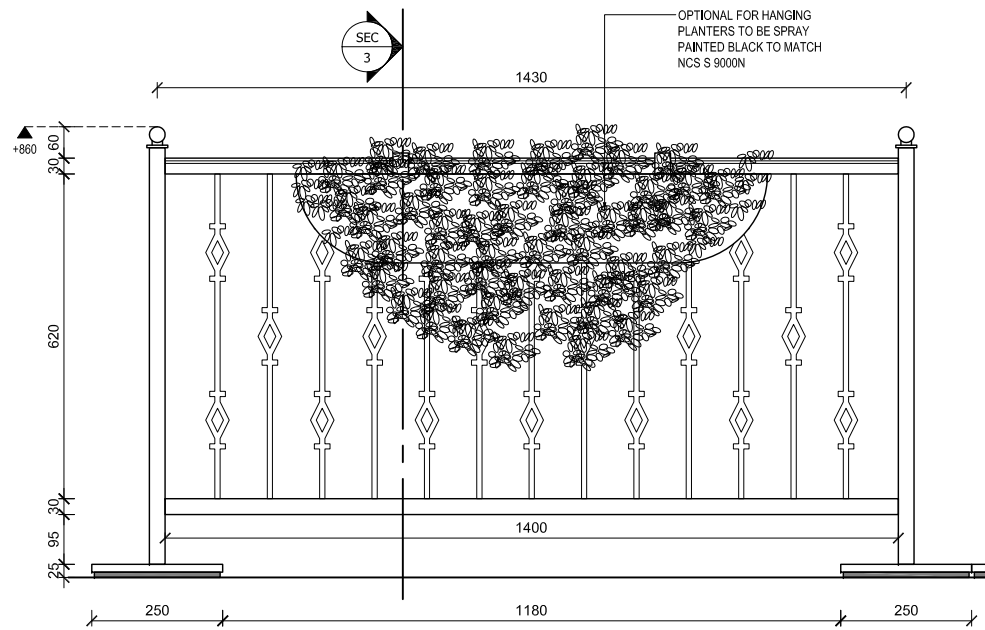
PO BOX 120789
SAIF
SHARJAH
UAE
Tel: +971 6 557 5229
Fax: +971 6 575 889
Zebra Projects FZE, Source No: 0501-04425



1 DETAILED PLAN
scale 1:10

4 DETAIL
scale 1:2

5 DETAIL
scale 1:2



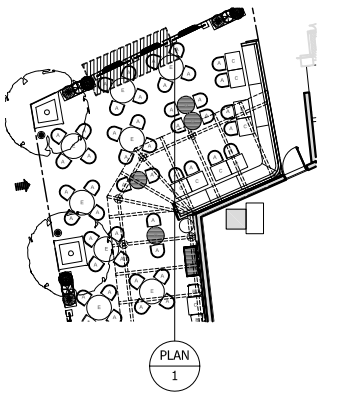
2 FRONT ELEVATION
scale 1:10

3 SECTION THRU
scale 1:10

GENERAL NOTES
This drawing is the property of zebra Projects Ltd and is not to be copied, reproduced, retained or disclosed to any unauthorized person, either wholly, electronically or in part without the written consent of zebra Projects Ltd.

ILLUSTRATED BRIEF
Any drawing prefixed with 'Illustrated brief' in the drawing title block must not in any way be used on site as a construction drawing or used for final detailed coding.

MAINTENANCE NOTES



LOCATION PLAN

NOTE:
A) MATERIAL/ FINISH AS REQUIRED BY DETAIL OR ASSEMBLY. MATERIAL/ FINISH TO BE AS DURABLE AS POSSIBLE.
B) THE STRUCTURE OF THE GUARD RAIL NEEDS TO BE REVIEWED AND APPROVED BY THE OWNER'S ARCHITECT AND STRUCTURAL ENGINEER.
C) FABRICATOR IS RESPONSIBLE FOR COORDINATING WITH THE ENGINEER TO ENSURE STEADINESS OF THE GUARD RAIL.

REVISION	INT	DATE
A	FIRST ISSUE	2012-06-26

CLIENT
MH AL SHAYA
PROJECT TITLE
BARSSERIE THE AVENUES MALL KUWAIT

GUARD RAIL DETAILS

DRAWING TITLE	DATE
1:10. 1:2 @ A2	2012-06-07
23242	AQ
PROJECT NO.	DRAWN BY
23242/300	A
DRAWING NO.	REVISION



PO BOX 120789
SAIF
SHARJAH
UAE
Tel: +971 6 557 5229
Fax: +971 6 575 889
Zebra Projects FZE, license No. 0501-04425